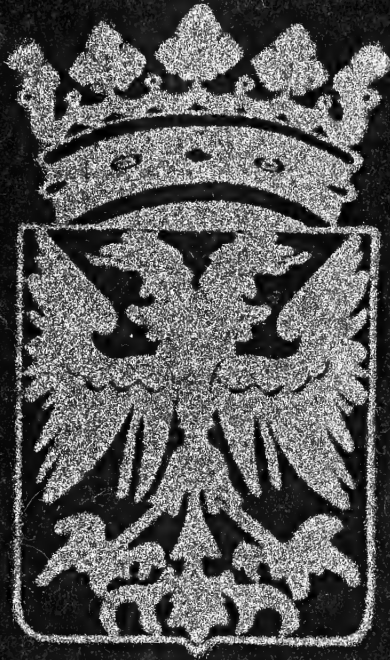
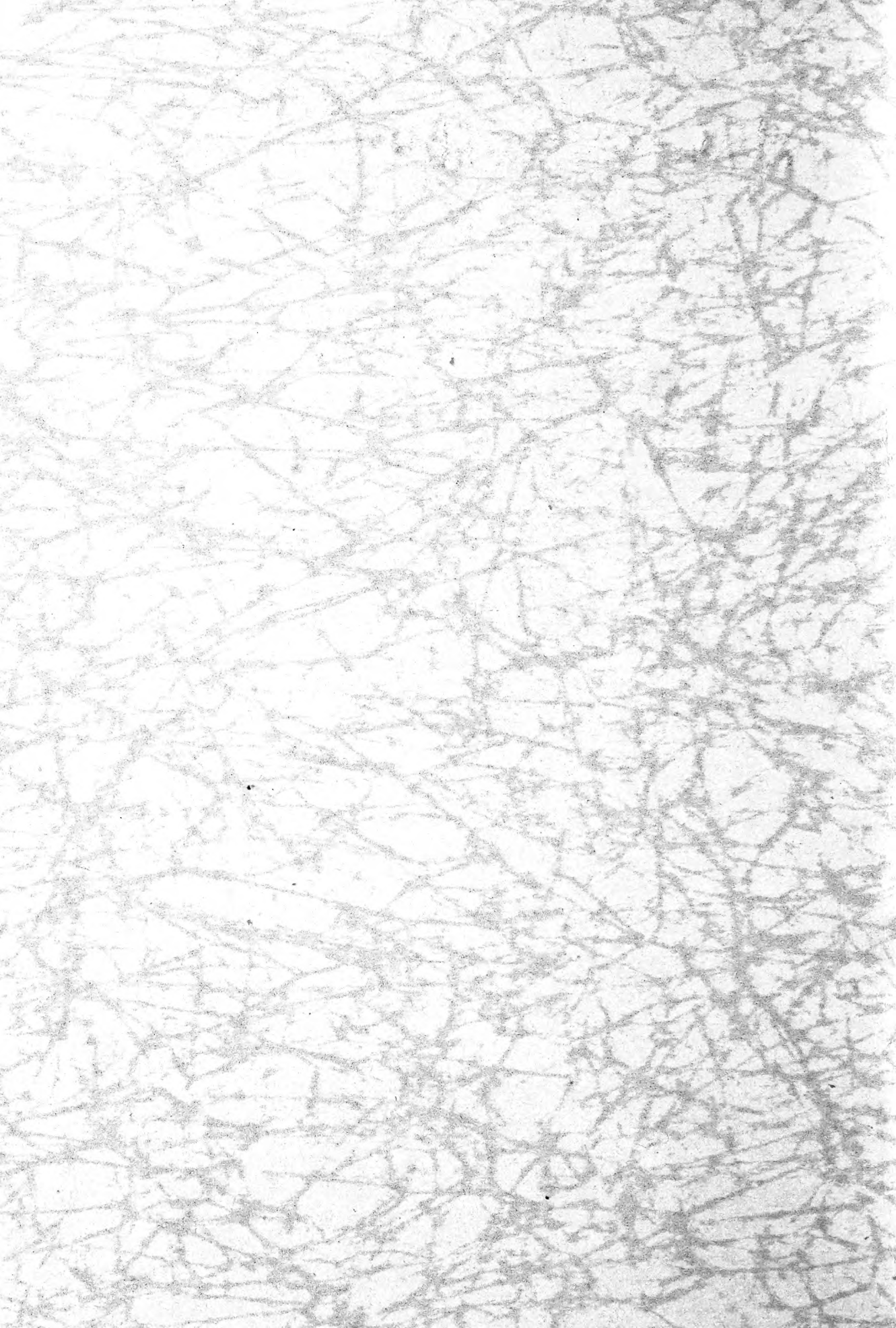



Historic, Archive Document

Do not assume content reflects current scientific knowledge, policies, or practices.



Arnhemia





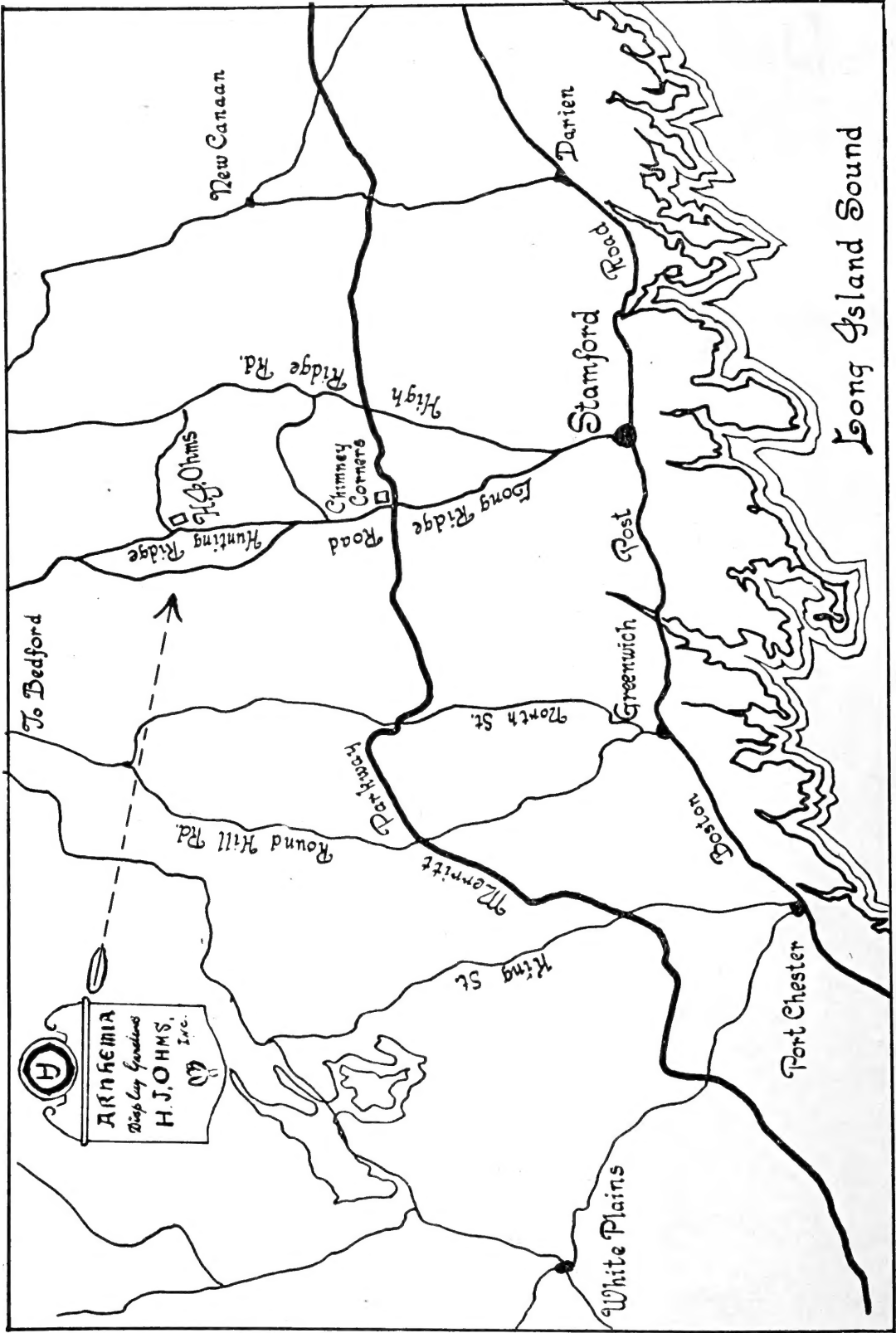
*The choicest
and best
in
Flowerbulbs*

H. J. OHMS, INC.
FLOWERBULB SPECIALISTS
ARNHEMIA GARDENS
Hunting Ridge and Haviland Roads
Stamford, Conn.

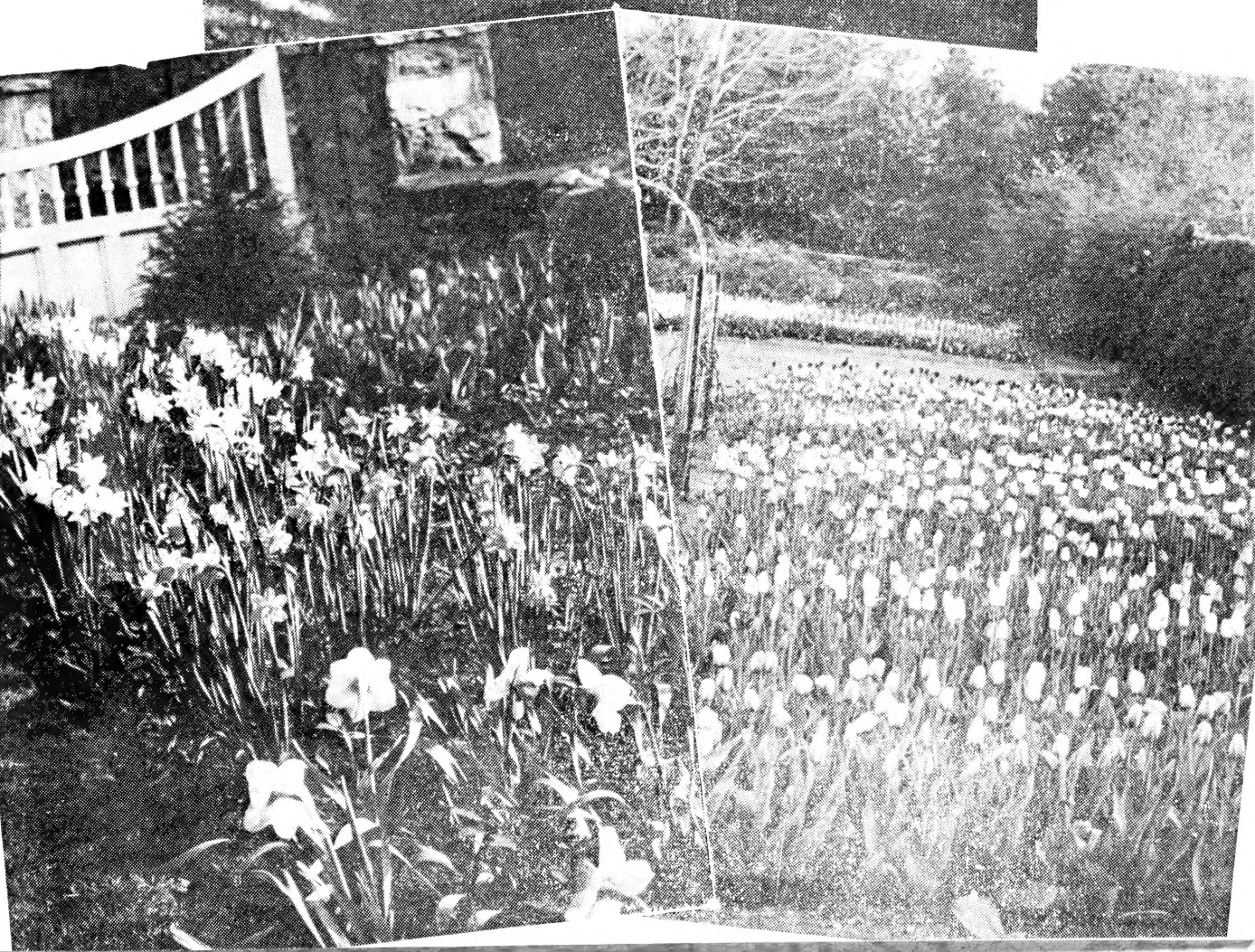
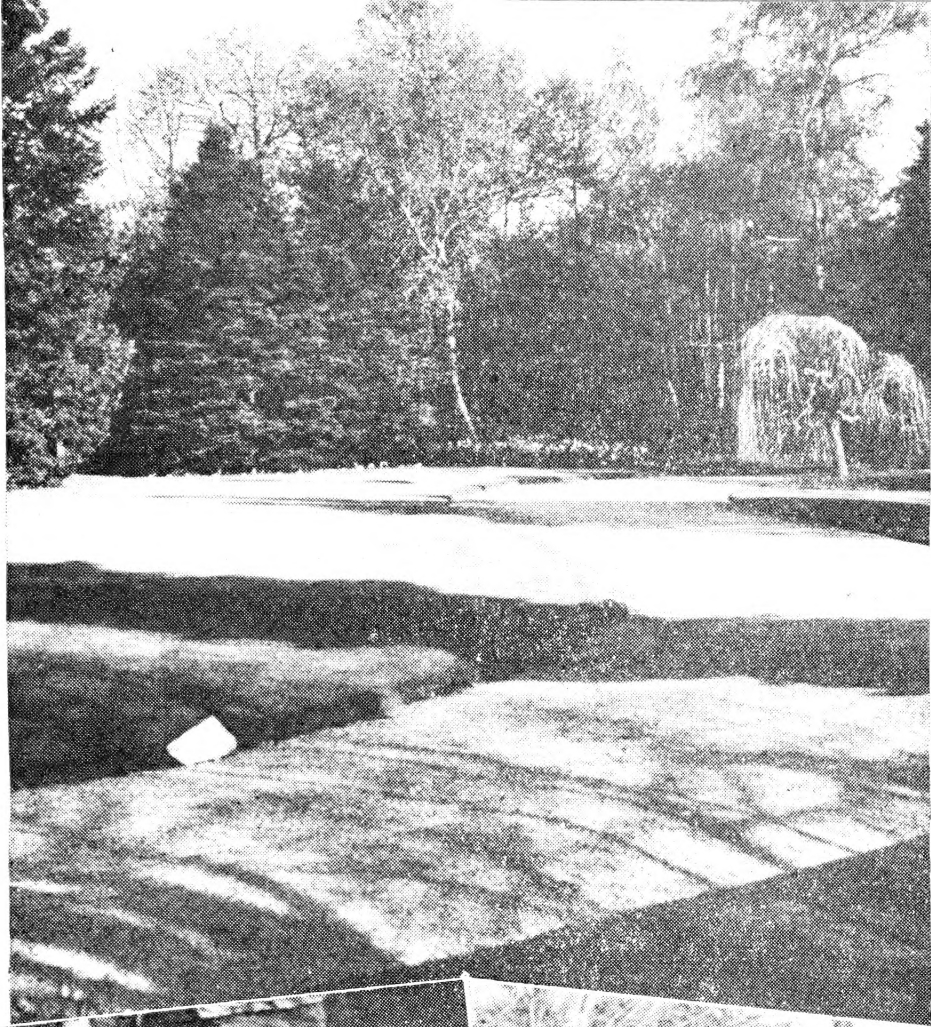
P. O. Box 222

Tel. 2-1243





How to Reach "Arnhemia"



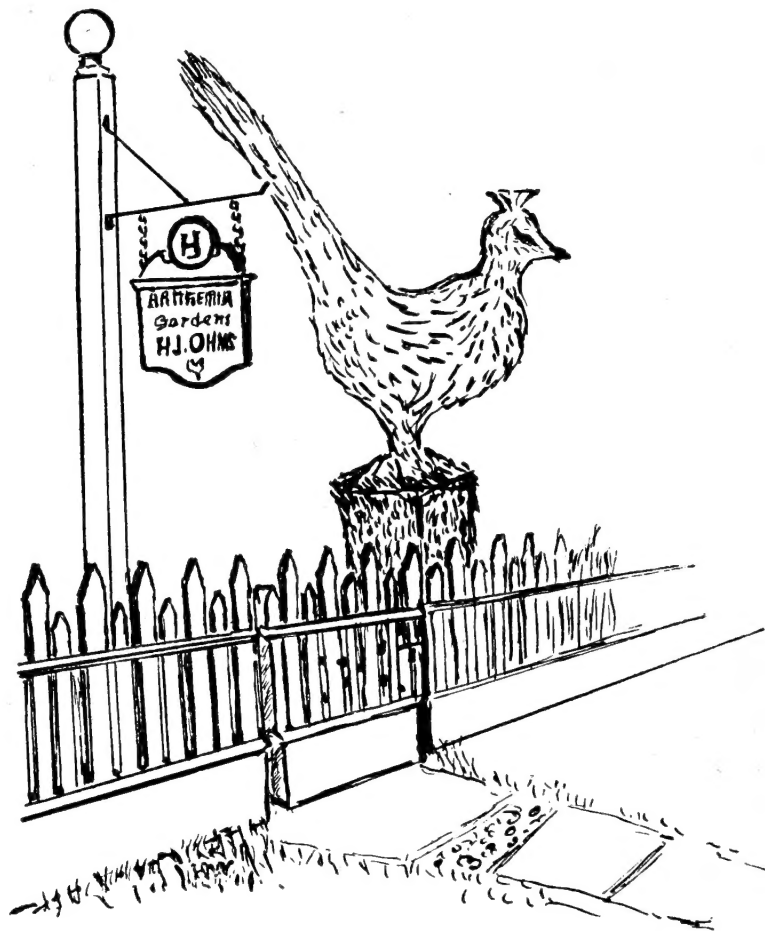
The Topiary Peacock

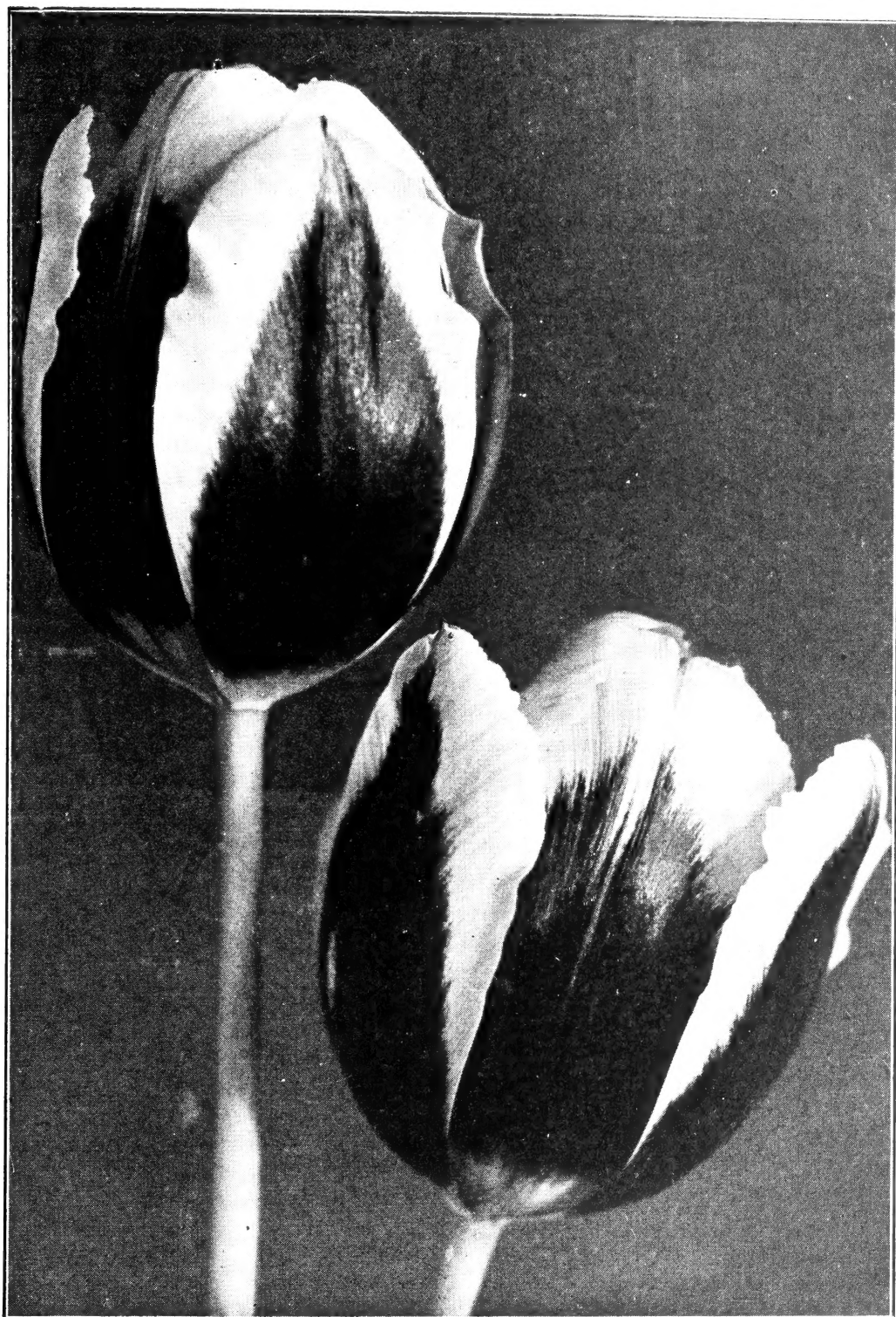
Welcomes You At The Garden Gate

Throughout the Seasons there is something of interest to you at Arnhemia.

The finest flowerbulbs, direct importations from The Netherlands, Narcissi, Tulips, Hyacinths, are on parade in Spring, giving you the opportunity, not alone to select your favorite colors, but also to study color harmony and proper planting.

Throughout the summer, a visit to Arnhemia will prove relaxing as well as educational; come to us with your garden problems.





TRIUMPH TULIPS PRESIDENT VON HINDENBURG

Triumph Tulips

With all due respect to the old Single and Double Early Tulips, it is now generally accepted, that the Triumph Tulips, with their much longer stems, very much sturdier growth and substance, are far better adapted to the American climate, therefore will last longer outside and also for early forcing give more satisfactory results.

The Triumph Tulips originate from crossing Single and Double Early Tulips with Darwin Tulips, which gave them the form and habits of the Darwin Tulips and they flower at the same time as the Early Tulips.

BANDOENG. Mahogany, golden edge. Height 22 inches.
\$1.50 for 10, \$12.50 per 100.

CRATER. The very deepest blood-red, not unlike the Darwin Tulip Eclipse. Large flower and splendid forcer; height 24 inches.
\$1.50 for 10, \$12.50 per 100.

EDITH EDDY. Magnificent purple, edged white; unusual combination of eccentric beauty; height 20 inches.
-\$1.75 for 10, \$15.00 per 100.

KANSAS. Pure white, with a yellow base. Blooms early. Ivory stamen. Height 20 inches.
\$1.65 for 10, \$13.00 per 100.

KORNEFOROS. Brilliant cherry-red with white base; one of the newest and superior exhibition varieties. Excellent early forcer; height 24 inches.
\$1.75 for 10, \$15.00 per 100.

PRESIDENT VON HINDENBURG. This is a splendid exhibition variety, commanding attention wherever shown. The very large, shapely flower is of a garnet red color, with a golden-yellow edge; height 22 inches.
\$1.75 for 10, \$15.00 per 100.

QUEEN OF THE NORTH. Very beautiful flower of grand size and noble shape; the pure white color suffuses to a distinct, broad band of the showiest pink, toward the edge of the petals. Still in bloom, when the Late Tulips are at their best. \$1.75 for 10, \$15.00 per 100.

URSA MINOR. Golden yellow, gracefully formed flower of large size and good substance; height 22 inches.
\$1.50 for 10, \$12.50 per 100.

Peony Flowered Tulips

(DOUBLE MAY FLOWERING TULIPS)

Although not new, the Peony flowered Tulips created a renewed enthusiasm amongst the visitors of "Arnhemia" last Spring and planted by themselves, in front of foundation plantings they are extremely effective. The Peony flowered Tulips bloom later than the Early Tulips and are still in bloom when the Late Tulips come in.

They are very useful for cutting and most attractive floating in a shallow bowl.

BLEU CELESTE. Dull violet-purple of unusual beauty; extremely large, double flower. \$1.75 for 10, \$15.00 per 100.

CHERRY BLOSSOM. Lively deep mauve, with narrow yellowish edges. \$2.10 for 10, \$18.00 per 100.

COXA. Brilliant carmine-red, edged yellow. The large flower is of exotic beauty with sturdy stem; height 22 inches. \$1.65 for 10, \$13.00 per 100.

EROS. The very double flower of a pretty old rose color, attracts attention. Of fine form and sturdy growth; height 20 inches. \$1.65 for 10, \$13.00 per 100.

MOUNT TACOMA. Pure white flower, is of immense size. Height 18 inches. \$1.70 for 10, \$14.00 per 100.

ORANGE SUPERB. Beautiful dark orange, with lighter orange edge; extremely exotic and rich in color. \$1.75 for 10, \$15.00 per 100.

OTTAWA. Clear golden yellow; very beautiful. \$1.75 for 10, \$15.00 per 100.

PLEKDA. Antique copper, with edges of gold; a most beautiful creation of unusual beauty. \$2.10 for 10, \$18.00 per 100.

UNCLE TOM. Very dark glossy red; height 22 inches. \$2.10 for 10, \$18.00 per 100.

Parrot Tulips

These have been in existence for ages and apparently the majority, especially the old varieties, came from the Bizarres. Their petals are lacinated and marked and feathered with brilliant yellow and scarlet colors.

BLUE PARROT. A sport of Darwin Tulip Bleu Aimable. The color is a showy bright violet, shaded steel blue. The unusual flower is large and carried erect on a strong stem, 30 inches tall.
\$2.10 for 10, \$18.00 per 100.

FANTASY. Being a sport of Clara Butt, this tulip has the same true pink color and habits; the greenish edge makes it the most unusual of all.
\$1.60 for 10, \$13.00 per 100.

GADELAN. The inside of the petals is of a bright violet-purple, the outside violet-purple to bluish violet, white edged, marked emerald-green. Sport from Sensation; height 22 inches.
\$2.75 for 10, \$25.00 per 100.

RED CHAMPION. A sport of Darwin Tulip Bartigon; elegantly formed and of sturdy texture; the color is a deep shiny red; a unique variety in every way.
\$2.15 for 10, \$19.00 per 100.

ROSE CLOUD. The double Parrot Tulip, sport of Murillo, white-rose tinted. Makes a refined impression as a cutflower in a bowl on the dinner table.
\$4.75 for 10, \$45.00 per 100.

SUNSHINE. This beautiful deep-golden novelty is a sport of Cottage Bouton d'Or; strong, erect stem. Considered by many as one of the most outstanding Parrot Tulips. Height 20 inches.
\$3.25 for 10, \$30.00 per 100.

THERESE. A beautiful large tulip, carried on a strong stem; sport of Farncombe Sanders, which it resembles in color, being a brilliant rosy-red; height 26 inches.
\$2.75 for 10, \$25.00 per 100.

VIOLET QUEEN. Lovely deep lavender-violet; a splendid novelty, which every tulip fancier should have. \$2.10 for 10, \$18.00 per 100.

Botanical Tulips

The general characteristics of the wild species, all of which are natives of Asia Minor and Central Asia, are bright colors and recurved petals. Many varieties are very dwarf and as such most suited for rockeries; some force well and are very effective, grown in pots.

CLUSIANA. Also known as Lady Tulip. The small pointed flower is of a delightful rosy white color, with bright rose stripes, not unlike a "peppermint stick," as often remarked by its enthusiastic admirers. The inside is pure white with a large, almost blue center. Fine for forcing; height 14 inches. April flowering.

\$2.00 for 10, \$17.50 per 100.

EICHERI. A grand tulip from Turkestan, producing immense crimson-scarlet flowers, with glistening black center, marked with gold; height 11 inches.

\$1.10 for 10, \$9.00 per 100.

FLORENTINA ODORATO (Sylvestris). Very fragrant yellow flowers, often two to a stem; outside bronze; height 18 inches.

\$1.70 for 10, \$14.00 per 100.

FOSTERIANA Mme. LEFEBER. Largest of all Botanical tulips of a beautiful deep red with a black base.

\$2.00 for 10, \$17.50 per 100.

KAUFMANNIANA. Large creamy flower, brilliantly marked with carmine, resembling somewhat the waterlily. The inside of the flower is pearly white, with a yellow base; height 8 inches. Excellent for forcing and naturalizing.

\$1.70 for 10, \$14.00 per 100.

KAUFMANNIANA BRILLIANT. A large glowing scarlet flower of great substance, with yellow center, carried on a strong stem; height 8 inches.

\$2.95 for 10, \$24.50 per 100.

KAUFMANNIANA GRANDIFLORA. An extremely large flowering strain of Kaufmanniana, producing white flowers, with the bright red stripe, which is typical of this variety.

\$2.50 for 10, \$22.50 per 100.

KAUFMANNIANA PRIMROSE. A handsome, well shaped flower of soft primrose-yellow; height 8 inches.

\$1.75 for 10, \$15.00 per 100.

LINIFOLIA. Beautiful dainty species, producing in April glowing scarlet flowers, with blue purple center; height 7 inches.

\$2.25 for 10, \$20.00 per 100.

MARJOLETTI. A small flower of very attractive color, being a primrose yellow, shaded carmine-red at the base. Flowers in May; height 14 inches.

\$1.50 for 10, \$12.50 per 100.

PERSICA (Breyniana). Fragrant yellow flowers, bronze on the exterior, are borne in twos or threes on a slender curving stem; height 3 inches.

\$2.10 for 10, \$18.00 per 100.

PRAESTANS, Zwanenburg, Var. Bright vermillion-red, extra free; height 18 inches.

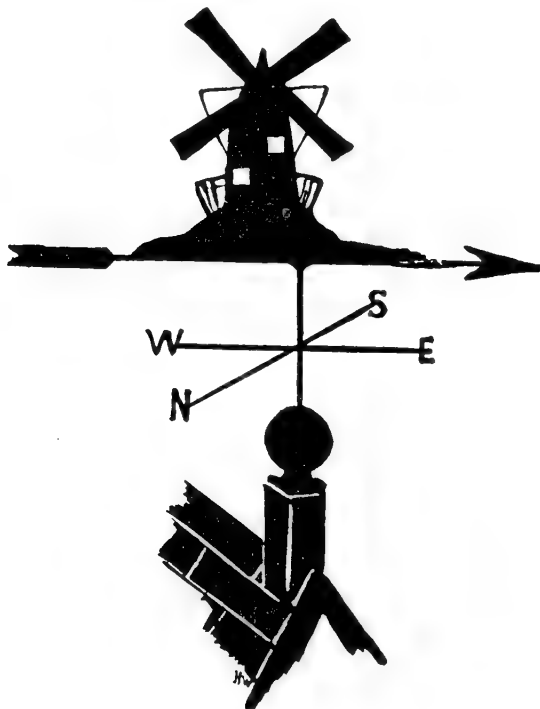
\$2.10 for 10, \$18.00 per 100.

SAXATILIS. Very rare, bearing often two lilac flowers with yellow center on each stem; height 14 inches.

\$2.25 for 10, \$20.00 per 100.

SYLVESTRIS, Var. Tabris. A free flowering broad-petalled form introduced from Persia, the flowers are lemon-yellow colored; height 16 inches.

\$1.75 for 10, \$15.00 per 100.





BOTANICAL TULIPS — Kaufmanniana

Darwin Tulips

ANGEL'S DREAM. This is the improved Clara Butt, egg shaped, white base and purple pollen. Much taller than Clara Butt.

\$2.25 for 10, \$20.00 per 100.

BLACK GIRL. Nearly true black; robust, tall variety of great charm.

\$2.10 for 10, \$18.00 per 100.

BLUE PEARL. One of the softer, light lavender varieties, creating a decidedly light blue hue. Very effective. \$4.50 for 10, \$42.50 per 100.

CAROLINE TESTOUT. A tulip of perfect shape and exceptional lasting qualities. The color is a soft rose with a large white base. Height 30 inches.

\$1.90 for 10, \$16.00 per 100.

CHARLES NEEDHAM. Vermillion-red. Perhaps the finest red Darwin. Very large, exceptionally strong stems. Grand for exhibition. Height 30 inches.

\$1.65 for 10, \$13.50 per 100.

CORDELL HULL. A sport of Darwin Tulip Bartigon, with all the characteristics of this old, but still outstanding variety. The color is a brilliant deep red, with broad, pure white markings down to the base of the flower, which is excellently shaped and stands erect on a tall, strong stem. Height 30 inches.

\$1.75 for 10, \$15.00 per 100.

DEMETER. Deep violet-blue, very large well shaped flower. An early and good forcer.

\$2.00 for 10, \$17.50 per 100.

ECLIPSE. Self-colored glowing blood-red, with steel-blue base. A huge flower, often having an extra number of petals; height 25 inches.

\$1.65 for 10, \$13.50 per 100.

GIANT. Deep reddish purple, shaded dark violet with white base. Handsome flower of enormous size on long stem; sturdy habit; height 29 inches.

\$1.65 for 10, \$13.50 per 100.

GLACIER. A giant among pure white Tulips, white base and white anthers. Tremendous over-shaped flower of great substance. Some of the flower-petals measure 6 inches in length; straight stem. Highly recommended. Height 30 inches.

\$1.90 for 10, \$16.00 per 100.

GLORIA SWANSON. An enormous crimson-red flower, with bluish base. Fine for exhibition and of sturdier habits than the average; height 32 inches.

\$1.90 for 10, \$16.00 per 100.

GOLDEN AGE. Deep golden yellow, inside slightly lighter; yellow base and yellow anthers. Large flower of true Darwin shape on tall, strong stem; truly outstanding. \$1.75 for 10, \$15.00 per 100.

HELEN EAKIN (White Perfection). Pure white; base not noticeable, anthers black. A pure white giant Darwin Tulip; height 29 inches. \$1.90 for 10, \$16.00 per 100.

KING MAUVE. A flower of unusually beautiful form and color. It is a tall variety of an unusual shade of soft mauve, shaded with soft rose. Height 30 inches. \$1.75 for 10, \$15.00 per 100.

LADY HILLINGDON. This is a very beautiful Tulip of sturdy texture and excellent habits. The color is extremely unusual, seldom found amongst the Darwins, being a salmon-buff, marvelously suffused with lilac; height 28 inches. \$1.90 for 10, \$16.00 per 100.

MRS. HAROLD IRVING PRATT. Very large flower of a light bluish lilac color, with edges of petals yellow, flushed lilac-mauve, producing a most beautiful and unique effect; height 34 inches. \$2.10 for 10, \$18.00 per 100.

MR. VAN ZIJL. Soft rose pink with broad pink margin. A very lovely tulip with a strong stem. One of the finest in this color; height 28 inches. \$1.65 for 10, \$13.50 per 100.

NARDI. Very large rosy-red tulip, shaded purple. An all-around enlarged Pride of Haarlem. \$2.10 for 10, \$18.00 per 100.

NEW-ORLEANS. Very large, substantial flower, rich pansy violet merging into dark crimson and dull dark rosy magenta. Base indigo-blue, anthers black. \$2.25 for 10, \$20.00 per 100.

NIPHETOS. Beautiful lemon yellow, with creamy-white base and anthers; the flowers are large, of noble form and strong texture. Height 29 inches. \$1.70 for 10, \$14.00 per 100.

PRIDE OF ZWANENBURG. A very large, salmon-rose flower of great substance. One of the finest Darwins introduced. A strong and vigorous grower with outstanding qualities. Highly recommended for exhibition purposes; height 30 inches. \$1.70 for 10, \$14.00 per 100.

PRINCESS MARY. Long, egg-shaped flower, of an extremely beautiful, brilliant pink. Excellent for forcing. \$1.75 for 10, \$15.00 per 100.

QUEEN OF THE NIGHT. One of the darkest Tulips lately introduced, superior to other varieties of this type. Large flower on tall, stiff stem. Height 30 inches. \$2.00 for 10, \$17.50 per 100.

SCARLET LEADER. Petals blood-red, shaded bronze, white centre. Very large and substantial flower. \$1.65 for 10, \$14.00 per 100.

SCOTCH LASSIE. Pure deep lavender, with darker shade inside and a dark blue base. Large flowers of great substance, remaining in flower for a long period of time; height 29 inches. \$1.65 for 10, \$13.50 per 100.

SPRINGFIELD. Grand flower of the purest white, beautiful rounded shape, tall and graceful. Base slightly sulphury, anthers black; height 32 inches. \$1.90 for 10, \$16.00 per 100.

THE BISHOP. Finest deep violet, blue base, white halo. Beautiful form; height 29 inches. \$1.75 for 10, \$15.00 per 100.

THE PEACH. A lovely peach colored tulip with large white center. The flowers are large and are carried on a strong, erect stem; height, 28 inches. \$1.75 for 10, \$15.00 per 100.

TUBERGENS GLORY. Glossy pink with a silver edge. \$1.75 for 10, \$15.00 per 100.

VENUS. Large, pure silvery rose; white base, ringed pale blue. Very lovely color, good form and substance; excellent forcer; height 28 inches. \$1.75 for 10, \$15.00 per 100.

WHITE GIANT. One of the finest new white introductions. The large well-formed flower is of splendid substance, borne on a strong, stiff stem; height 30 inches. \$2.10 for 10, \$18.00 per 100.

WILLIAM COPLAND. Lilac-rose; the earliest forcing variety among Darwins; height 25 inches. \$1.60 for 10, \$13.00 per 100.

WM. COPLAND PINK. This tulip is a pink sport of the well-known Wm. Copland, has the same marvelous early forcing qualities; the color is a beautiful, soft rose-pink. \$1.60 for 10, \$13.00 per 100.

YELLOW GIANT. Huge, clear yellow; flower of massive open form, held erect on tall stem. \$1.60 for 10, \$13.00 per 100.

ZWANENBURG. Pure white, with black anthers. A large substantial flower and one of the best white Darwins yet introduced; height 28 inches. \$1.60 for 10, \$13.00 per 100.

Breeder Tulips

Breeders are the unbroken or self-colored forms of the old Florist Tulips; they have large flowers on robust stems and are easily distinguished from the Darwin Tulips by their yellow centers and the typical haze on the outside of the petals. They flower at the same time as the Darwin and Cottage Tulips, during the month of May.

The rich and artistic blending of purple and old gold, bronze and terra cotta, brown and violet, buff and maroon, have made these Breeders immensely popular.

BACCHUS. Large long flower on a graceful stem; dark violet-blue, with darker bloom on outside of petals, inside violet-blue, white base; height 33 inches. \$1.60 for 10, \$13.00 per 100.

BARCAROLLE (Mrs. P. Ramsey Hunt). Immense flower of beautiful form and splendid substance; the color is a bright violet-purple, yellow base and black anthers. The clearest purple of its class; height 32 inches. \$2.15 for 10, \$18.00 per 100.

BLANCHE FERRY HOOKER. Splendid novelty, the color is a deep cherry-rose, margined orange and flushed carmine on the inside of petals, base yellow and green, anthers black. \$2.75 for 10, \$25.00 per 100.

CHERBOURG. Beautiful, large egg-shaped flower, golden feathered and streaked purple-brown; base slightly stained; height 40 inches. \$1.70 for 10, \$14.00 per 100

CUNERA. Purplish-bronze, yellow base. Very large and fine novelty. Height 32 inches. \$1.75 for 10, \$15.00 per 100.

DILLENBURG. A very beautiful Tulip of a glowing salmon-orange; the large flower of graceful loose shape is borne on a tall stem. The finest Breeder of this color. \$1.65 for 10, \$13.50 per 100.

DOM PEDRO. Coffee-brown and maroon, shaded with old gold. It is the outstanding Breeder Tulip in this color. Robust in habit and long lasting; height 28 inches. \$1.65 for 10, \$13.50 per 100.

GEORGE GRAPPE. Soft mauve, clear blue base. An exceptionally large flower of fine form carried on a very tall, strong stem; height 38 inches. \$1.70 for 10, \$14.00 per 100.

HIRSCHBRUN. Large flower, dull carmine-violet with brown, merging into mahogany towards the edges. A most unusual shading, very effective for indoor use. \$1.90 for 10, \$16.00 per 100.

HUCHTENBURG. Bluish lilac and chestnut-red, margined brownish gold. Large olive-green base, black anthers. Very large flower on tall stem, good form and substance; height 39 inches. Award of Merit Haarlem. \$2.15 for 10, \$18.00 per 100.

INDIAN CHIEF. Reddish mahogany flushed purple. A huge flower of great substance and most artistic shape; height 32 inches. \$2.10 for 10, \$18.00 per 100.

JEROEN BOSCH. Olive tinted, bronze margined. \$2.10 for 10, \$18.00 per 100.

JESSEY. Clear deep coffee-brown, flushed bronzy red, yellow base. A very large flower of fine substance carried on a tall erect stem. Height 34 inches. \$1.75 for 10, \$15.00 per 100.

JOY McARDEN (Orange Glory). A dainty, lovely flower, of extremely fine coloring, being a light brownish orange, interior bright red-orange, base greenish yellow; height 28 inches. \$2.10 for 10, \$18.00 per 100.

LA HABANA. New Giant Breeder of unique reddish brown colouring. Large flower on a very strong stem. \$1.75 for 10, \$15.00 per 100.

LOUIS XIV. Rich dark purple, shaded steel blue, heavily flushed bronze, edged brown; enormous size and stately bearing. A great favorite with everyone; for border planting or as a cutflower it is unsurpassed; height 32-40 inches. \$1.75 for 10, \$15.00 per 100.

ORANGE DELIGHT. Yellowish bronze, gay colouring. Very early. \$1.75 for 10, \$15.00 per 100.

TANTALUS. A splendid novelty of great merit. The color is a light cadmium-yellow, overlaid with dull slate-violet; base dark yellow, anthers black; height 30 inches. \$2.25 for 10, \$20.00 per 100.

UNIQUE. Extremely large oval shaped flower of bronzy-red color, edged lighter bronze; interior also light bronze. The flower is carried on a straight, strong stem. Height 29 inches. \$2.10 for 10, \$18.00 per 100.

VELVET KING. Immense flower on extra strong stem. Its robust growth makes it one of the most conspicuous; fine cup shaped form; bright, dark royal purple, small white, sharply defined base; height 31 inches. \$1.90 for 10, \$16.00 per 100.

Cottage Tulips

These are varieties which for the most part have been found in the old cottage gardens of the British Isles. They flower about the same time as the Breeders and Darwins, distinguishing themselves by rather long and pointed petals, which in some varieties are gracefully reflexed.

ADVANCE. This is undoubtedly one of the outstanding new varieties; the very large fiery red flowers with clear blue base are striking; splendid exhibition variety; height 32 inches.

\$1.75 for 10, \$15.00 per 100.

ALBINO. Fine white late tulip, splendid form and habits; height 26 inches.

\$1.75 for 10, \$15.00 per 100.

BARBARA PRATT. Light cochineal-carmine, edged lilac-rose, base yellow with narrow green edge, anthers yellow. Very beautiful tulip with slightly reflexed petals. Exhibition variety; height 36 inches.

\$2.10 for 10, \$18.00 per 100.

CAPRI (Welwyn). This is a splendid cutting variety of very good form; the color is a soft yellow; height 27 inches.

\$2.10 for 10, \$18.00 per 100.

CARRARA. This fine Tulip has created, by its beauty, a sensation at all shows; it is round and pure white as the marble from which it has its name. A sturdy and bold flower; one of the best whites; height 25 inches.

\$1.60 for 10, \$13.00 per 100.

CONDE NAST. Creamy yellow, very nice rosy flush. Height 32 inches.

\$2.25 for 10, \$20.00 per 100.

DIDO. A perfect flower, excellent in color and form, poised firmly at the top of its straight stem. Color is deep rich pink with yellow edge. It is an unusual and magnificent Tulip. Fragrant; height 30 inches.

\$1.65 for 10, \$13.50 per 100.

ELIZABETH OHMS. This Tulip is a novelty of great merit. The color is a lovely clear rose, tinged salmon, inside of a deeper shade. The flower is of enormous size, yet perfect in form and of good substance; height 29 inches.

\$2.20 for 10, \$19.00 per 100.

GOLDEN HARVEST. This outstanding novelty is in one class with Mongolia and Mrs. John T. Scheepers. Very large round flowers of the brightest pure yellow, on tall, sturdy stems. Exhibition variety.

\$2.10 for 10, \$18.00 per 100.

- GOLDEN STATUE.** Pale yellow, with deep yellow margin.
\$2.10 for 10, \$18.00 per 100.
- GRENADIER.** Dazzling scarlet-orange. Very fine form and substance.
The most brilliant colour of all tulips.
\$1.65 for 10, \$13.50 per 100.
- G. W. LEAK.** This novelty is a genuine addition to the ranks of pleasing red tulips. The color is a geranium-like, the flower is of large size, fine form and substance. A splendid garden-variety, excellent for exhibition.
\$2.10 for 10, \$18.00 per 100.
- HENRI CORREVON.** Geranium-red, white base.
\$1.50 for 10, \$15.00 per 100.
- INGA HUME.** A large, perfectly formed, red flower with a broad yellow edge, and a large black base. Inside yellow slightly suffused red. The blooms, carried on tall, erect stems, remain in bloom for a long period of time. Highly recommended for forcing. Height 26 inches.
\$2.10 for 10, \$18.00 per 100.
- MARSHALL HAIG.** Among the new Tulips this ranks supreme as being one of the finest brilliant self-red colors. A flower of magnificent size and texture and much admired on account of its brilliant tone; height 30 inches.
\$1.65 for 10, \$13.50 per 100.
- MAYFLOWER.** This variety is considered the largest Tulip in existence; the color is a very beautiful fiery red, not unlike Advance, being a cross between one of the Gesneriana types and Tulipa Greigii; blue base. One of the earliest Cottage Tulips to flower; height 30 inches.
\$2.10 for 10, \$18.00 per 100.
- MONGOLIA.** This is the best yellow novelty of recent introduction. The egg-shaped flower, carried on a tall, sturdy stem, is of a deep yellow color of pastel tone; excellent exhibition variety; height 32 inches.
\$1.75 for 10, \$15.00 per 100.
- MRS. F. E. DIXON (Sulphur Beauty).** Of immense size, artistic and lovely in form, the softly colored, sulphury yellow bloom is carried upright on strong, stiff stem. The petals have a wax-like texture and are of a substance rarely met with. An excellent variety in every way, undoubtedly the finest of the Cottage Hybrids; height 28 inches.
\$1.90 for 10, \$16.00 per 100.
- MRS. JOHN T. SCHEEPERS.** Elegantly formed, oval-shaped, large flowers of deep golden yellow, very clear of color, are carried on tall, thick, sturdy stems with clear green foliage. The entire plant is of the strongest development. The blooms are enormous with petals of unsurpassed substance and of fine lasting quality. A real giant among Tulips. This magnificent variety is recognized by experts as one that especially suits the American climate. Awarded highest honors whenever exhibited. \$1.65 for 10, \$13.50 per 100.

MRS. MOON. An especially good all-yellow of a rich deep tone. It is of unusual form, the long, flaring petals curving twice, producing a vase effect instead of a cup. Brilliant yellow inside; sweet scented; height 25 inches. \$1.65 for 10, \$13.50 per 100.

ORANGE OPHELIA. Salmon orange, terra cotta blush; very fine novelty. \$3.75 for 10, \$35.00 per 100.

ROSABELLA. Very fine light pink, edges nearly white, creamy centre. Resembles closely a rosebud. \$1.70 for 10, \$14.00 per 100.

VIRIDIFLORA PRAECOX. Petals apple-green with edge of greenish white to yellow-green. Base and anthers yellow. Unique shade and very attractive. \$7.50 for 10, \$60.00 per 100.

WORLD'S FAIR. Brilliant rose with lighter edge, cream white base, ivory stamen, very large imposing blooms, tall stem. \$1.65 for 10, \$13.50 per 100.

ZOMERSCHOON. Deep rose-pink, flaked white and soft rose, striped from base to top and edge of petals. Centre and anthers yellow. Pointed petals. \$3.50 for 10, \$32.50 per 100.



Lily Flowering Tulips

As the result of crossing the dainty pointed petaled *Tulipa retroflexa* with a pink Darwin, we have here a new, very beautiful and distinct race of Tulips, having graceful, slightly reflexing flowers on tall, sturdy stems.

ALASKA. Very clear-bright yellow; beautiful slender flower; height 27 inches. \$1.75 for 10, \$15.00 per 100.

DON JOSE. Dark red. Wonderful novelty. \$2.25 for 10, \$20.00 per 100.

ELEGANS ALBA. A delightful creamy white Tulip with narrow carmine margin that does not spread as the flower ages. Height 24 inches. \$1.75 for 10, \$15.00 per 100.

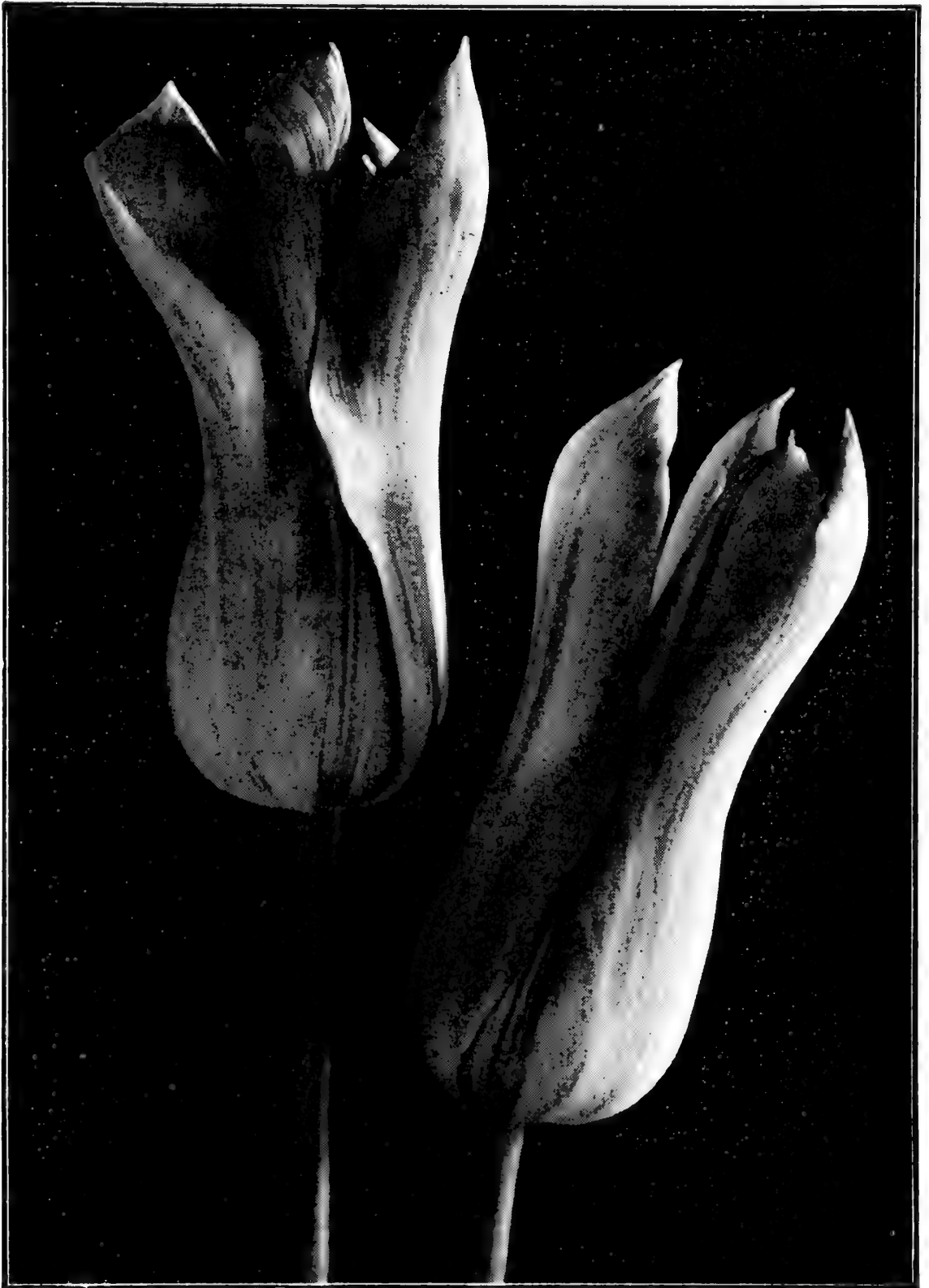
MARCELLINA. Carmine rose, with lighter edge, white center and yellow stamen. Improved Sirene. \$2.25 for 10, \$20.00 per 100.

MIGNON. Clear orange of great beauty; of fine form and great elegance. \$3.00 for 10, \$37.50 per 100.

SIRENE. A very beautiful flower. Rich rose-pink with pale pink at the margins of segments, white base. Fine forcer. Great exhibition flower of exquisite beauty. \$2.10 for 10, \$18.00 per 100.

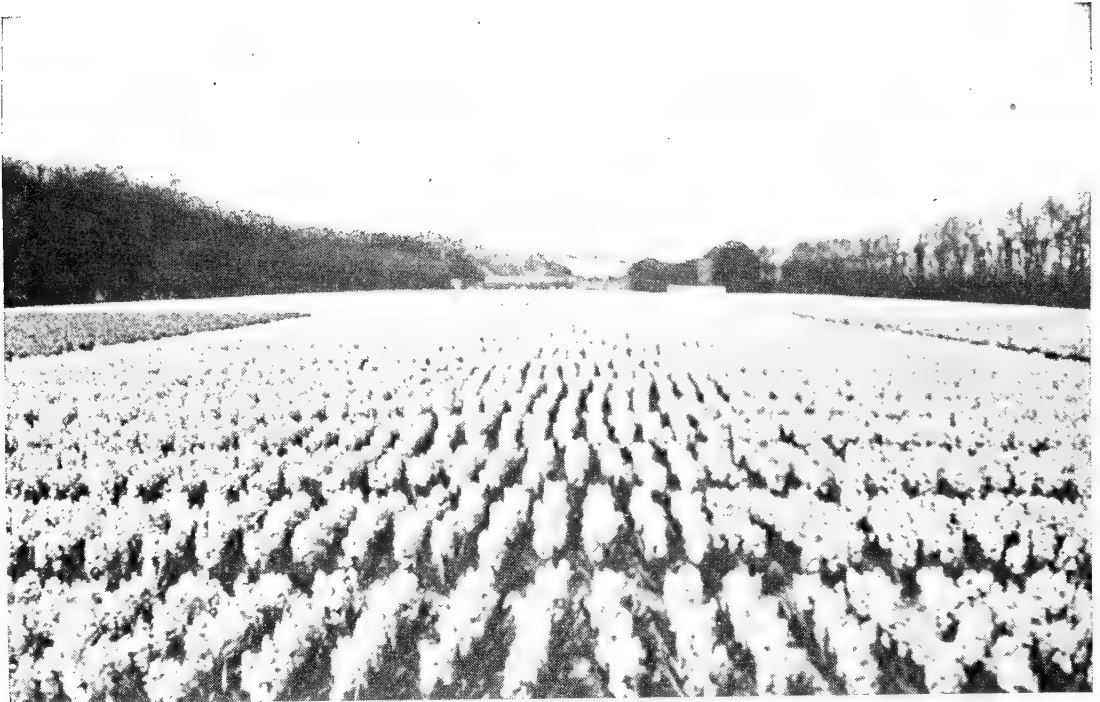
WHITE CROSS. Very fine white Tulip. The three outer petals are reflexed, the others straight. \$2.25 for 10, \$20.00 per 100.





LILY FLOWERING TULIPS ALASKA

Exhibition Hyacinths



BLUE SHADES

BISMARCK. A broad spike of beautiful light blue; one of the best varieties in this color for early forcing.

DR. LIEBER. Very early; pale lavender-blue.

DUKE OF WESTMINSTER. Splendid purplish-blue, with a pronounced white center, greatly admired wherever shown.

GRAND MAITRE. Deep porcelain blue. A very large well-formed spike on a strong stem; very popular.

KING OF THE BLUES. Splendid dark blue; large spike.

MYOSOTIS. Light porcelain blue.

QUEEN OF THE BLUES. Clear light blue, with beautiful silvery shade. Excellent for medium-late forcing.

All these \$4.00 for 10, \$35.00 per 100.

RED & ROSE SHADES

GENERAL DE WET. A beautiful rose sport of Grand Maitre.

GERTRUDE. Rosy pink. Large compact truss.

LADY DERBY. Clear rose-pink; fine spike with large bells.

LA VICTOIRE. One of the finest dark red Hyacinths.

MARCONI. Rosy pink. Late.

QUEEN OF THE PINKS. A splendid rosy-pink.

All these \$4.00 for 10, \$35.00 per 100

GARIBALDI. Bright carmine-red. Compact truss.

JAN BOS. Carmine red.

NIMROD. Deep rose; the earliest rose Hyacinth.

PINK PEARL. New unusual pink early.

TUBERGEN'S SCARLET. Fiery scarlet spike; very fine and early.

All these \$4.50 for 10, \$40.00 per 100.

WHITE

LA GRANDESSE. Large, pure white.

L'INNOCENCE. Pure white.

All these \$4.00 for 10, \$35.00 per 100

ARENTINE ARENSEN. Snowwhite. \$4.50 for 10, \$40.00 per 100.

YELLOW

CITY OF HAARLEM. Pure golden yellow; large flower.

PRINS HENDRIK. Beautiful creamy yellow.

YELLOW HAMMER. Creamy yellow, compact spike.

All these \$4.50 for 10, \$40.00 per 100

PURPLE & VIOLET SHADES

LORD BALFOUR. Purplish lilac. Early.

MAUVE QUEEN. Lilac violet.

SIR WILLIAM MANSFIELD. Bright violet.

All these \$4.50 for 10, \$40.00 per 100

Spring Flowering Crocuses

The following list includes, what we consider the best of the so-called Ideal Crocus, outstanding types with very large flowers and clean, distinct colors. We do not grow any other varieties and are convinced that you will also see the vast difference.

Prices quoted are for largest bulbs, giving the greatest number of flowers.

BLUE, PURPLE AND LILAC SHADES

EARLY PERFECTION. Dark blue. Extra novelty.

GRAND LILAC. Dark lilac.

NIGGERBOY. Very deep purple.

PURPUREA GRANDIFLORA. Large purple-blue.

QUEEN OF THE BLUES. Soft blue.

REMEMBRANCE. Splendid lavender.

YELLOW

GRAND YELLOW. Beautiful golden yellow of enormous size.

WHITE

KATHLEEN PARLOW.

WHITE LADY.

SNOWSTORM. Best white in existence.

STRIPED

STRIPED BEAUTY. Light blue stripes on a white ground.

All varieties \$0.85 for 10, \$6.00 per 100



First Choice
at
Arnhemia

OF THE FANCIERS, EXPERTS AND AMATEURS ALIKE,

were the following varieties of Narcissi and Tulips, featured for the first time last Spring in our garden.

The thrilling experience of having something quite exquisite in your garden, all your own, is a never to be forgotten joy. Treat yourself to the finest.

Mendel Tulips

ORANGE WONDER. Pure sparkling orange, illuminated lighter edge, early; very sturdy stem and flower. \$4.00 for 10.

Darwin Tulips

ANGEL'S DREAM. Clear pink, the improved Clara Butt, egg shaped, sturdy stem and large flower. \$2.25 for 10.

BLANCA. Largest of all whites and the purest; ivory anthers. \$3.00 for 10.

SCARLET LEADER. A very striking tulip of sturdy habits; black center. \$1.65 for 10.

Breeder Tulips

CUNERA. Purple edges overlaid with the sheen of sculptured bronze; yellow base. \$1.75 for 10.

JESSIE. Coffee brown and bronze; very tall. \$1.75 for 10.

JOY McARDEN. Light brownish orange, interior bright red-orange, base greenish yellow. \$2.10 for 10.

LA HABANA. Giant reddish brown. \$1.75 for 10.

ORANGE OPHELIA. Salmon orange with terra cotta blush; large flower of fine form. ~~\$3.75~~ for 10.

UNIQUE. Extremely large flower of bronzy red color, edged lighter bronze. \$2.10 for 10.

Cottage Tulips

CONDE NAST. Creamy yellow, shadowed rose; very large flower of noble form. \$2.25 for 10.

HENRY CORREVON. Clear geranium red; white base. \$1.50 for 10.

WORLD'S FAIR. Brilliant rose with lighter edge. \$1.65 for 10.

Lily Flowering Tulips

MARCELLINA. Carmine rose with lighter edge. \$2.25 for 10.

MIGNON. Clear orange of great beauty. \$3.00 for 10.

THE BRIDE. Purest white of great elegance. \$2.00 for 10.

Narcissi

BICOLOR QUEEN. Pure white flat perianth, lovely shaped yellow trumpet. \$2.25 for 10.

CARLTON. Uniform yellow flower with broad overlapping flat perianth and a large expanded cup. \$2.15 for 10.

ELLY NEY. Pure white, almost round overlapped perianth, deep lemon yellow cup with red edge. \$0.75 each.

FORTUNE. Fine flat overlapping soft yellow perianth, with a long bold crown of glowing orange red. \$3.00 for 10.

GOLDEN HARVEST. Large golden yellow trumpet, fine perianth. \$2.50 for 10.

LADY KESTEVEN. Pure snow white perianth with blood-red cup. \$4.50 for 10.

LIVIA. Sulphur-yellow and burnt orange; a beautiful and very large double variety. \$2.50 for 10.

LORD WELLINGTON. A magnificent deep golden yellow trumpet of great form. \$2.50 for 10.

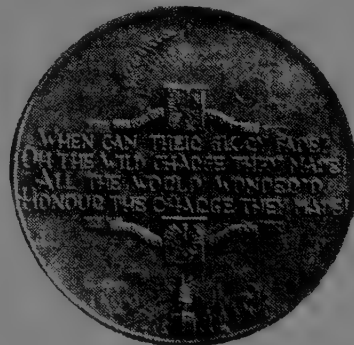
MARY COPLAND. Semi-double novelty of pure cream-white color, with a golden ray down the center, interspersed with shorter petals of lemon and brilliant orange. \$3.00 for 10.

ROXANE. Large creamy white trumpet with round overlapping pure white perianth. \$3.00 for 10.

SCARLET ELEGANCE. Golden yellow perianth, long cup of an intense deep red. \$2.00 for 10.

TEXAS. A beautiful double novelty of pale yellow color, interspersed with brilliant scarlet petals. \$4.00 for 10.

MUSIC HALL. A large deep yellow trumpet with pure white overlapping petals and at the base of the best bicolors. \$3.00 for 10.



Miscellaneous Bulbs

CHIONODOXA (Glory of the Snow)

GIGANTEA. Largest type of Chionodoxa; the color is a soft, light blue. \$0.90 for 10, \$6.00 per 100.

LUCILIAE. Flowers about the same time as the Crocuses, producing from 12 to 15 small star-shaped sky-blue flowers, with a pure white heart. Fall planting, 3 inches deep. \$0.90 for 10, \$6.00 per 100.

LUCILIAE ALBA. This is the white form of the above; splendid. \$1.15 for 10, \$8.00 per 100.

LUCILIAE ROSEA. A pink form of the above. \$1.15 for 10, \$8.00 per 100.

SARDENSIS. This is the earliest Chionodoxa; the color is a rich blue. \$0.90 for 10, \$6.50 per 100.

TMOLI. Bright blue and white, flowers later than Luciliae. \$0.90 for 10, \$6.50 per 100.

ERANTHUS (Winter Aconite)

HYEMALIS. Little yellow flowers, like Buttercups, with setting of fine green. Fall planting, 3 inches deep. \$0.90 for 10, \$6.00 per 100.

CILICICA. Flower is larger than above and of deeper yellow. \$1.00 for 10, \$7.50 per 100.

FRITILLARIA MELEAGRIS (Guinea Hen Flower or Checkered Lily)

These produce in early April, dwarf pendent, bell-shaped flowers in various shades of color, curiously checkered.

\$1.15 for 10, \$8.00 per 100.

MELEAGRIS ALBA. This is the pure white form of the above. \$1.15 for 10, \$8.00 per 100.

FRITILLARIA IMPERIALIS (Crown Imperial). Hardy border plants of stately growth, producing clusters of pendent bell-shaped flowers, surmounted by a tuft of green leaves. Plant in October, about 6 inches deep and 8 inches apart.

AURORA. Red orange, height 30 inches. \$0.60 each, \$5.50 for 10.



MUSCARI HEAVENLY BLUE



LEUCOJUM VERNUM (Spring Snowflake)

- MAXIMA RUBRA.** Robust and strong growing form of the above. very rare. Height 34 inches. \$0.85 each, \$7.00 for 10.
- ORANGE BRILLIANT.** The orange form of the above. Height 36 inches. \$0.60 each, \$5.50 for 10.
- GALANTHUS (Snowdrops).** These well known little white flowers need no introduction; Fall planting, 2 inches deep.
- NIVALIS.** \$1.15 for 10, \$8.00 per 100.
- ELWESII.** This is a large type. \$1.25 for 10, \$10.00 per 100.
- NIVALIS FLORE PLENO.** Double Snowdrop. \$1.25 for 10, \$10.00 per 100.
- IXIOLIRION PALLASII.** A rare species of hardy bulb from Central Asia. Umbels of deep blue six-lobed flowers, borne in Spring. The popular name is Siberian Bluebell; a splendid novelty. \$1.50 for 10, \$12.50 per 100.
- LEUCOJUM VERNUM (Spring Snowflake).** Somewhat similar to the Snowdrop, but larger and of stronger texture; height about 8 inches. Flowers late in April, producing beautiful, large, white flowers, tipped green. \$8.00 per 100.
- MUSCARI (Grape Hyacinths).** These lovely Spring flowers, with their dainty spikes of bell-shaped flowers, are splendid for mass planting, edging and for the rock-garden, where once planted, they will thrive and multiply.
- BOTRYOIDES ALBUM.** This is the white form. \$1.15 for 10, \$8.00 per 100.
- HEAVENLY BLUE.** Bright sky-blue. This is undoubtedly the best variety of Muscari for mass-planting. Flowers about the same time as Crocuses and Chionodoxa. \$0.90 for 10, \$6.00 per 100.
- SCILLA (Wood Hyacinths or Blue Bells).** The many varieties of Scillas listed below are all excellent for woodland planting or for the rockgarden. They do not all flower at the same time and are therefore even more useful.
- SCILLA CAMPANULATA BLUE BIRD.** Porcelain-blue, candelabra-shaped bells. Plant 4 inches deep. \$1.10 for 10, \$8.00 per 100.
- SCILLA CAMPANULATA EXCELSIOR.** Very large, bright blue. Late \$1.25 for 10, \$10.00 per 100.

SCILLA CAMPANULATA ALBA MAXIMA. The pure white form of the above. \$1.25 for 10, \$10.00 per 100.

SCILLA CAMPANULATA ROSE QUEEN. The tall flowerspike carries many fine large bells of a soft lilac rose. \$1.25 for 10, \$10.00 per 100.

SCILLA NUTANS (English Blue Bells). Similar to the Campanulata type, but the flowerspike droops slightly. \$1.15 for 10, \$8.00 per 100.

SCILLA NUTANS ALBA MAJOR. The white form of the above. \$1.15 for 10, \$8.00 per 100.

SCILLA NUTANS ROSEA. A soft rose form of the above type. \$1.15 for 10, \$8.00 per 100.

SCILLA SIBIRICA BLUE. This is the most effective of the Scilla types, flowering very early; color bright blue. Plant three inches deep. \$1.00 for 10, \$7.50 per 100.

SCILLA SIBIRICA ALBA. The white form of the above. \$1.15 for 10, \$8.00 per 100.

TRITELEYA UNIFLORA. Root-like bulb which produces in early Spring pale-blue flowers with white centers; very attractive. \$1.10 for 10, \$9.00 per 100.



Eremurus

(FOXTAIL LILIES)

Planted in a prominent spot in your garden, six or eight of these tall and sturdy stalks, crowned by flower spikes of two to three feet long, composed of closely set bell-shaped flowers of a pure white, a delicate pink or a soft yellow, are a sight which will "take your breath away". The peculiarly shaped roots, consisting of a large solid crown, with long, brown, fleshy roots branching out, should be planted not over 5 inches deep, resting on a layer of sand to secure drainage. It is advisable to use ashes or coal around the crown; a light mulching will be sufficient wintercover. Sometimes they do not flower the first season, but once established they need no further care and will increase, provided they are not disturbed.

- BUNGEI SUPERBUS.** Deep yellow; flowers in July. \$2.00 each.
- ELWESII.** Beautiful soft pink, flowers in early June. \$4.00 each.
- ELWESII ALBUS.** Same habit as above; pure white, flowers late in June. \$4.00 each.
- HIMALAICUS.** Pure white; height 6 to 8 feet. June flowering. \$3.00 each.
- ROBUSTUS.** Rosy pink. Very fine. Flowers in early June. \$4.00 each.
- SHELFORD.** Coppery yellow. July flowering. \$3.00 each.
- WAREI.** Salmon buff. July flowering. \$5.00 each.

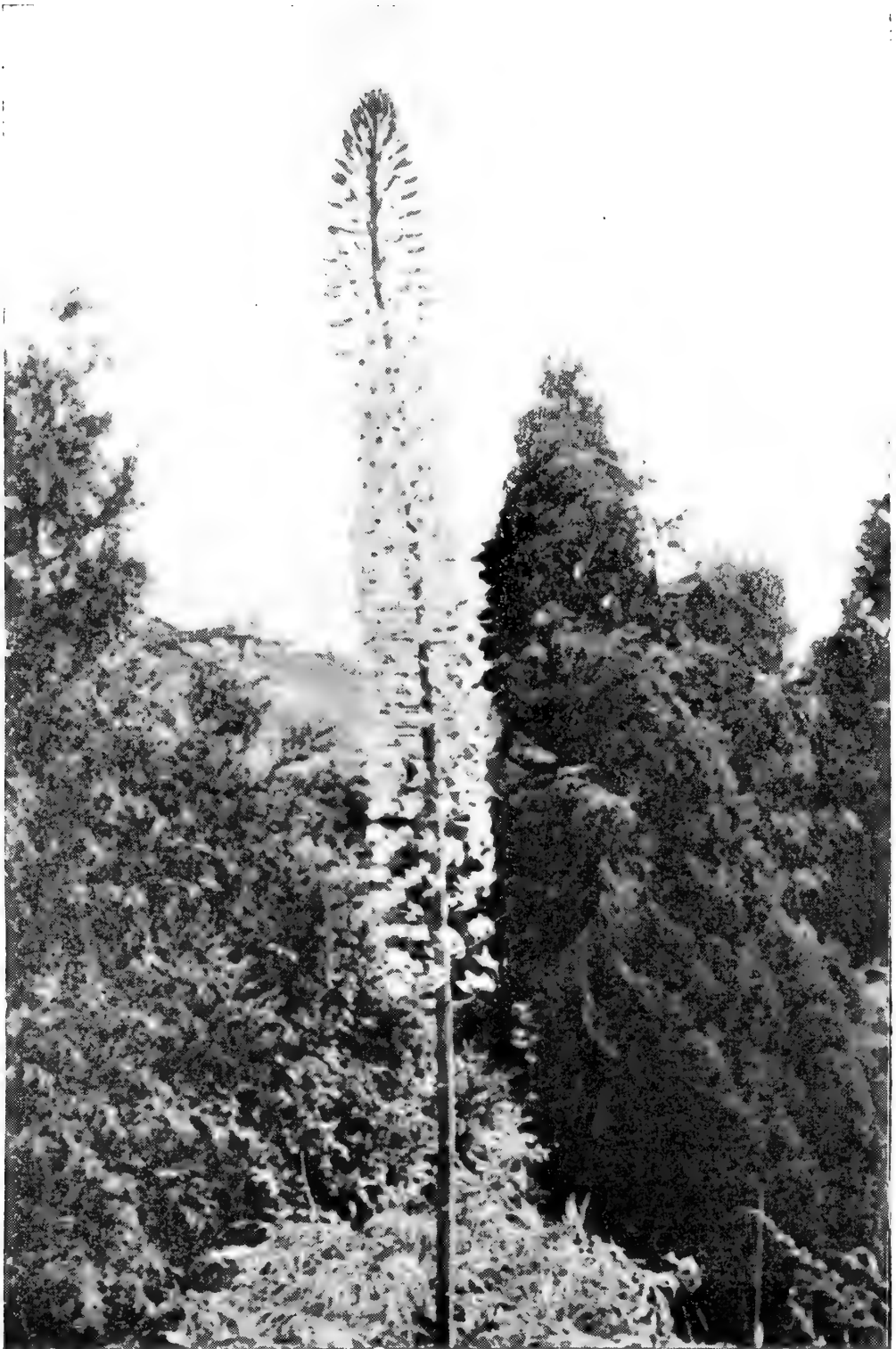
Lily of the Valley

(CONVALLARIA MAJALIS)

This shade loving plant with its glossy foliage and clusters of fragrant, pure white little bells, needs no introduction.

They are best planted in beds, shady position, northern exposure and clumps should be used for immediate effect.

- LILY-OF-THE-VALLEY CLUMPS.** Strong field grown clumps.
\$6.50 for 10, \$60.00 per 100.



EREMURUS (Foxtail Lily)



INCOMPARABILIS NARCISSI Mary C. Gilmour

Well overlapping clear yellow perianth and a beautifully frilled cup of glowing orange. A sterling novelty. \$3.00 each.

Narcissi

YELLOW TRUMPET DAFFODILS

Trumpet as long or longer than perianth segments; trumpet lemon-yellow or sulphur-yellow, with perianth of same shade.

ALASKA. Deep golden yellow, fine shaped trumpet.
\$2.75 for 10, \$25.00 per 100.

BEN HUR. A glorious "loud speaker" trumpet, deeply frilled of pure Roman gold, 2½ inches across at the mouth; in spite of its immense size the whole flower is finely proportioned, one of the best of the new giant trumpets.
\$3.00 for 10, \$27.50 per 100.

DIOTIMA. Considered by many experts as the very best of the new super-giant yellow trumpets; despite its huge size (perianth being five to six inches across) the whole flower is beautifully proportioned and is carried gracefully on flattened tapering stems, two feet tall, entirely free from the amaryllis-like stiffness of many of the giant trumpets; the broad overlapping petals form a star-shaped perianth of medium deep primrose trumpet somewhat more deeply colored, undoubtedly one of the top-notchers for many years to come.
\$9.00 for 10, \$85.00 per 100.

KING ALFRED. One of the finest of all yellow trumpets. Excellent early forcing variety.
\$2.50 for 10, \$22.50 per 100.

RAPTURE. Enormous golden yellow trumpet with deep yellow well overlapping perianth. A flower of immense substance.
\$3.50 for 10, \$32.50 per 100.

STATENDAM. Extremely large golden yellow trumpet daffodil of superb yet graceful proportions. Massive overlapping deep golden yellow perianth, large flaring, well formed trumpet. Very vigorous grower.
\$5.25 for 10, \$50.00 per 100.

WARWICK. Another of the striking King Alfred seedlings outstanding in every way and very early, refined stem and neck bearing a star-shaped perianth of great substance; golden yellow with trumpet a shade deeper in color.
\$2.75 for 10, \$25.00 per 100.



TRUMPET NARCISSUS ALASKA



INCOMPARABILIS CROESUS

WHITE TRUMPET DAFFODILS

Varieties with white perianth and white or nearly white trumpet including pink or apricot trumpets.

BEERSHEBA. A magnificent flower. Large, perfectly flat perianth trumpet long and beautiful flanged at mouth. A flower of great size, measuring nearly five inches across; a vigorous grower and a grand exhibition variety. \$4.75 for 10, \$45.00 per 100.

LA VESTALE. Giant trumpet type with pure ivory perianth, of informal design, with trumpet of deep cream yellow, tall, fine for small groups or naturalizing in dim shade; though of delicate appearance, it is of extra good substance and lasts well; very early. \$4.75 for 10, \$45.00 per 100.

LOVENEST. One of the very few members of the "pink daffodil" class; among the daintiest of all trumpets; medium in height with a starry shaped perianth of informal type; nicely proportioned trumpet of saffron yellow turning to apricot pink; delightfully charming at all stages; very early. \$3.75 for 10, \$35.00 per 100.

MRS. ERNEST H. KRELAGE. One of the finest white trumpet Narcissi. Produces large erect flowers of great substance. \$4.75 for 10, \$45.00 per 100.

MRS. R. O. BACKHOUSE. This is the best "pink daffodil." Fine informal perianth of ivory white and a beautifully proportioned, slim long trumpet of apricot pink, changing to shell pink at the deeply fringed edge. Early and long lasting. \$7.00 for 10, \$65.00 per 100.

PRESIDENT CARNOT. A self colored creamy white trumpet, of the Olympia type; with perianth petals slightly twisting and reaching forward, adding beauty of form to the charming color harmony. \$4.75 for 10, \$45.00 per 100.

BICOLOR DAFFODILS

Bicolor Trumpet Daffodils, with white or whitish perianth and a yellow, lemon or pale primrose trumpet.

HARVARD. An excellent new bi-color of good substance and form. Forces well and early. \$7.00 for 10, \$65.00 per 100.

JOHN FARQUHAR. A giant deep yellow trumpet with large, much overlapping white perianth. Faultless exhibition variety and extra fine when forced. \$3.25 for 10, \$30.00 per 100.

SPRING GLORY. Still a favorite both for the garden and for forcing; pure yellow trumpet, slightly paler perianth, excellent stem, and always free blooming. \$2.50 for 10, \$22.50 per 100.

INCOMPARABILIS NARCISSI

Cup or crown measuring from one-third to nearly the length of the perianth segments.

BERNARDINO. (2b) Perianth creamy white, cup edged orange, very free-flowering, good grower, recommended.

\$1.65 for 10, \$13.50 per 100.

CROESUS. (2a) Universally popular both for the garden and for exhibition; light canary-yellow perianth of perfect form, with outer petals nearly touching, the inner ones overlapping, opening flat; broad fluted cup of rich orange to base; substantial, free-flowering and a fine propagator; desirable in every way.

\$1.70 for 10, \$14.50 per 100.

DICK WELLBAND. (2b) One of our finest introductions, very strong grower and exceptionally free-flowering. The perianth is pure white and the cup flame orange. One of its most remarkable qualities is that the color does not fade, but rather intensifies with age. The flower lasts unusually long and we believe that this variety will be of the greatest value both for greenhouse work or for outside. Its great beauty lies in the startling contrast between petals and cup which makes it stand out in the largest collection of daffodils. A worthy companion to Francisca Drake. \$3.50 for 10, \$32.50 per 100.

FORTUNE. A giant early Incomparabilis of great substance. The bright yellow perianth is very smooth and well overlapping. The very large cup is deep-orange throughout.

\$4.75 for 10, \$45.00 per 100.

FRANCISCA DRAKE. (2b) It is impossible to describe adequately the beauty of this unusual flower of a distinct new type; the pure white perianth petals are of unusual substance; an inch and a half wide, and tinted gold at the base, which shows through on the outside; the cup, wide and deep, is golden yellow at the base, changing gradually to flame orange at the densely frilled edge; the flowers are held well above the fine foliage and give the effect of a flock of white seagulls taking flight; strong-growing and very free-flowering.

\$2.65 for 10, \$23.00 per 100.

HELIOS. (2a) Deep golden yellow perianth, semi-overlapping, the cup opens a little darker than the petals and in a cool climate gradually changes to light orange.

\$1.70 for 10, \$14.50 per 100.

JOHN EVELYN. (2b) Deservedly an international favorite; outstanding among the new Incomparabilis hybrids; flatly opening perianth, 4 to 5 inches across, with a flat cup nearly 2 inches in diameter, densely frilled, the perianth being pure white without trace of shading, and the cup lemon-yellow and fluted or shirred to the base, good neck, strong flower, free-flowering and a good propagator; one of the greatest daffodils of the present day and for years to come.

\$2.65 for 10, \$23.00 per 100.



BARRII NARCISSUS Alcida



LEEDSII NARCISSUS Mrs. Nettie O'Melveny

- MILFORD HAVEN.** (2b) Fine flower with cream-white perianth and wide cup ruffled and deeply frilled at edge, chrome yellow at base and shading into rich orange-scarlet, the same gorgeous color combination as in the Montbretia; "His Majesty."
\$2.65 for 10, \$23.00 per 100.
- ORANGE GLOW.** Yellow perianth of good substance, flaring trumpet, yellow with orange glow, rather frilled at edge.
\$2.35 for 10, \$21.00 per 100.
- RED CROSS.** (2a) Famous throughout the daffodil world, extra large, strong flower, opening flat, primrose perianth, and deep yellow cup densely frilled, of deep orange, substantial and long lasting and fine both in the garden and for exhibition.
\$2.65 for 10, \$23.00 per 100.
- SCARLET ELEGANCE.** Intense dark yellow perianth, with a lovely orange-red cup. Very attractive. \$1.95 for 10, \$17.00 per 100.
- SHEHERAZADE.** (2a) A very tall variety with citron colored perianth; beautiful proportions; heavily frilled cup of pure chrome yellow, self-color throughout with no trace of orange. \$2.00 each.
- WALTER HAMPDEN** (2a) Very tall and outstanding; bright primrose perianth and deep yellow trumpet of Loudspeaker type, with a tint of orange in the frills; very vigorous grower, medium late.
\$2.65 for 10, \$23.00 per 100.

BARRII NARCISSI

Cup or crown measuring less than one-third the length of the perianth segments.

- ALCIDA.** (3a) Giant flower, pure white perianth opening flat, star-shaped, with individual petals over 1½ inches wide, broad citron-yellow cup with blood-orange frill, strong grower, fine substance and wonderfully free-flowering, very late.
\$2.10 for 10, \$18.00 per 100.
- BATH'S FLAME.** (3a) Deep yellow; cup deeply edged orange-red; a giant flower and one of the finest in this group.
\$1.75 for 10, \$15.00 per 100.
- DIANA KASNER.** (3a) A cream-yellow perianth and a large fluted yellow cup with blood-red frill, very free flowering and an excellent forcer. Fine for show.
\$1.70 for 10, \$13.50 per 100.
- FIRETAIL.** (3b) D deservedly popular the world over; broad petaled creamy-white perianth and large orange cup with scarlet-orange frill.
\$2.65 for 10, \$24.00 per 100.

MRS. BARCLAY. (3a) Large flower with flat, reflexed, broad-petaled overlapping perianth of pale primrose, changing to pure white; deeply frilled flat cup of primrose-yellow, with a dainty orange picotee; extremely showy, and a great favorite in the garden or for exhibition. \$2.10 for 10, \$18.00 per 100.

SUNSTAR. (3a) Creamy-white, broad-petaled perianth, with distinct golden rays, extending up each petal from the base of the cup; small cup of clear deep yellow-orange; unique and very attractive. \$3.15 for 10, \$28.00 per 100.

LEEDSII NARCISSI

Perianth white, cup, white, or pale citron, sometimes tinged with pink or apricot.

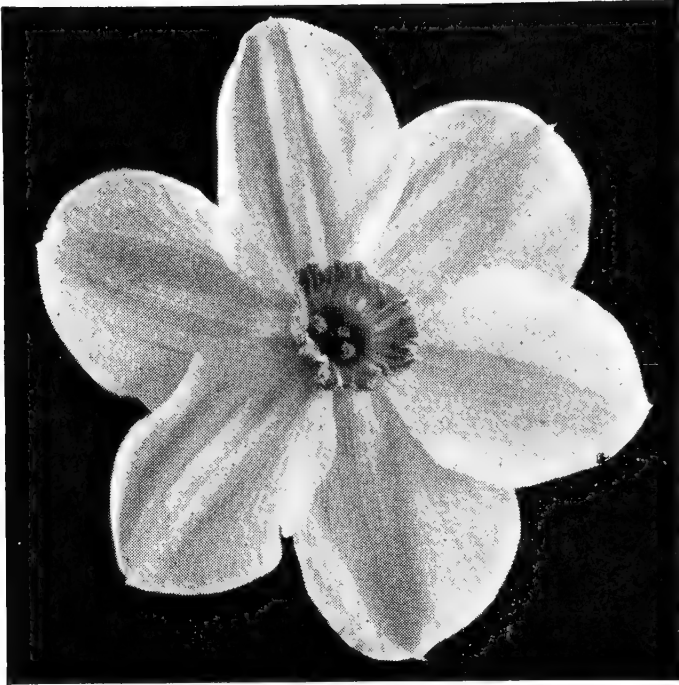
GERTIE MILLAR. (4a) Wonderful flower of the new Giant Leedsii type with pure white perianth similar to and as large as Van Waveren's Giant, with a beautifully proportioned pale primrose cup deeply fluted and frilled and of translucent texture; unusually long pistils and anthers match these colors perfectly; a most handsome flower. \$5.00 for 10, \$47.50 per 100.

HERA. (4b) Broad petalled, creamy white perianth, star shaped and deeply frilled cup of creamy white, with a dainty edging of light primrose. \$1.65 for 10, \$13.00 per 100.

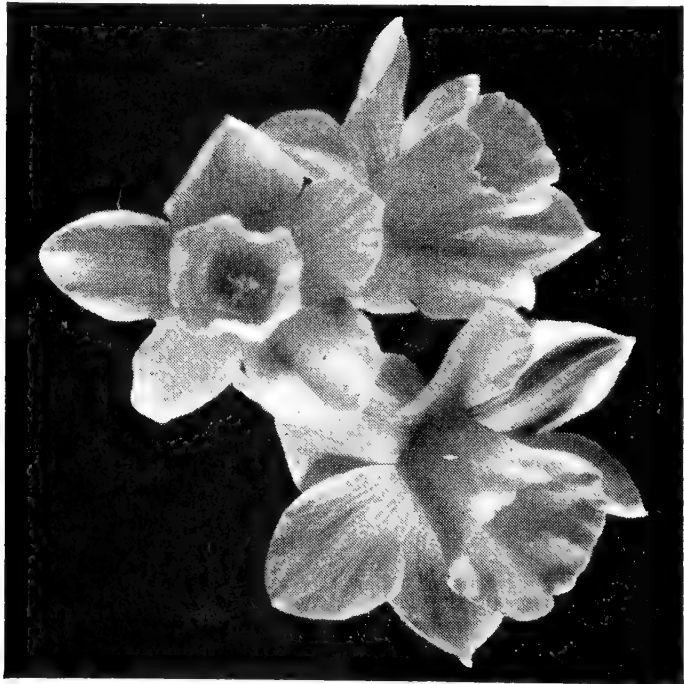
MRS. NETTIE O'MELVENY. (4b) Surely the "little people" must have been abroad frolicking in the moonlight when this fairy flower was born; a dancing daffodil with perianth and cup of clear lemon yellow, with orange picotee; splendid foliage, tall, graceful stem, and good neck; in every way a delightful flower and sure to become immensely popular. \$1.65 for 10, \$13.00 per 100.

SILVER STAR. (4a) Broad-petaled, star shaped perianth of pure cream-white, with finely proportioned, wide mouthed trumpet of primrose, changing to cream white, just a shade deeper than the perianth; extra fine and very free flowering. \$3.10 for 10, \$28.00 per 100.

TUNIS. Broad waved white perianth, large bold, ivory trumpet, flanged brim, flushed coppery at the edge. Giant Leedsii, tall, good forcer. \$2.75 for 10, \$25.00 per 100.



POETICUS NARCISSUS Snowking



JONQUIL HYBRID NARCISSUS Golden Sceptre

POETAZ NARCISSI

All Poetaz are hybrids from Poeticus Ornatus X Polyanthus Narcissi such as Soleil d'Or. The plants are tall and vigorous growers, bearing heads of large well-formed flowers, deliciously fragrant, and they have the great advantage over the Polyanthus types of being much hardier.

GLORIOUS. Tall, flower delightfully informal in habit, perianth Poeticus white with eye orange, edged red, good for semi-shade; very early and an excellent forcer. \$2.15 for 10, \$19.00 per 100.

GLONDYKE. Rich yellow perianth, darker cup; one of the finest yellow. \$1.65 for 10, \$13.00 per 100.

LAURENS KOSTER. Creamy white perianth, lemon-yellow cup, free-flowering, recommended. \$1.65 for 10, \$13.00 per 100.

POETICUS NARCISSI

These Poeticus varieties have snow-white petals and a small flattened eye or crown, yellow or lemon, edged scarlet or crimson. They are sweet-scented.

ACTAEA. The largest Poeticus in existence. Broad snow-white perianth of great substance and good form; the very large eye is broadly margined with dark red. \$1.80 for 10, \$15.50 per 100.

EDWINA. Purest white perianth, broad and overlapping petals; very flat cup, yellow edged red. Fine form and substance. \$1.65 for 10, \$13.00 per 100.

SNOWKING. Glistening white perianth, with exceptionally broad petals; cup with broad red edge; tall growing and good neck. \$1.70 for 10, \$13.00 per 100.

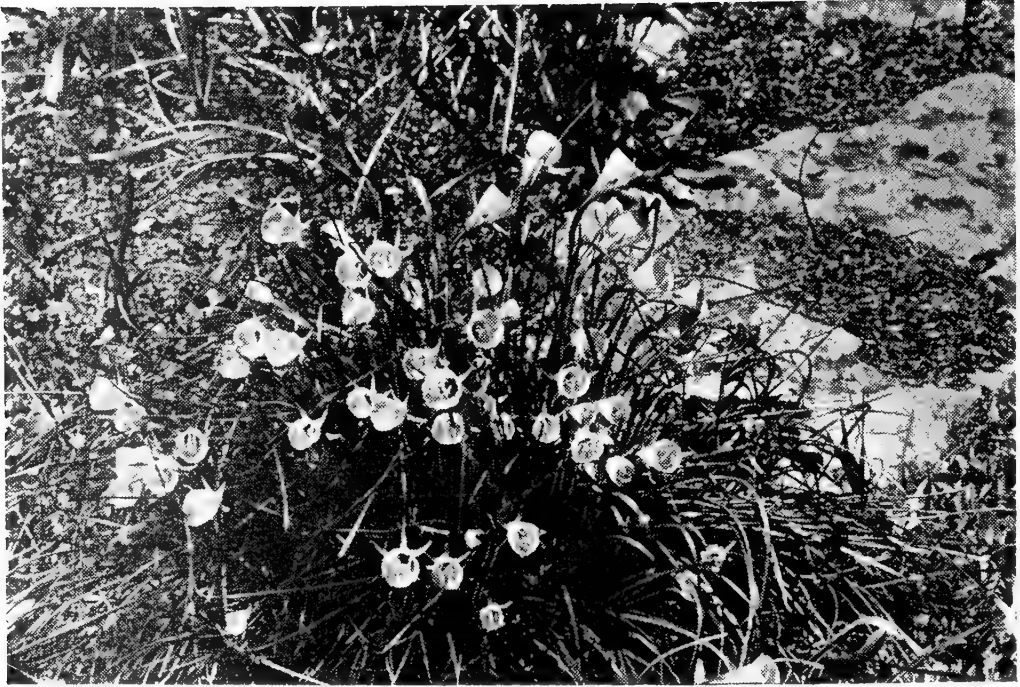
DOUBLE NARCISSI

ALBUS PLENUS ODORATUS. Snowy white, sweet-scented, highly recommended. \$1.70 for 10, \$13.00 per 100.

CHEERFULNESS. The double Elvira; a very pleasing double white Poetaz. Good stem; fine for show, as well as for the garden. \$1.75 for 10, \$15.00 per 100.

IRENE COPELAND. Large full double snowwhite flowers with primrose markings; a lovely distinct variety, with strong rigid stems. \$5.10 for 10, \$48.00 per 100.

TWINK. Perhaps one of the most promising daffodils introduced. It is a double of the semi-full type, the petals alternating a soft primrose and clear orange, and so arranged as to give the flower a most attractive appearance. Twink forces as easily as Golden Spur, but also flowers very early in the field. \$2.65 for 10, \$23.00 per 100.



Yellow Hoop Petticoat
NARCISSUS BULBOCODIUM MONOPHYLLUS



NARCISSUS BULBOCODIUM CONSPICUUS

Miniature Narcissi

FOR THE ROCKGARDEN

TRUMPET NARCISSI

MINOR. A most graceful and charming very early-flowering miniature daffodil of Maximus form, flowers with full yellow perianth gracefully twisted, the miniature trumpet being elegantly flanged at mouth, height 6 inches. This is one of the most scarce little daffodils and our stock is very limited. \$2.75 for 10, \$25.00 per 100

TRIANDRUS HYBRIDS

These are the cyclamen-flowered daffodils, with reflexing perianth. The flowers are more or less drooping, of elegant form and graceful habit.

TRIANDRUS AGNES HARVEY. A beautiful chalice-cupped hybrid, perianth snow-white, cup pure white sometimes flushed a soft apricot, one to three blooms on a stem, slightly drooping; height 13 inches. \$2.65 for 10, \$22.00 per 100.

TRIANDRUS ALBUS. An exquisite beautiful little species; it is of slender growth and produces a cluster of elegant creamy white little flowers with globular cup and perianth reflexing as in the Cyclamen; height 7 inches. \$4.75 for 10, \$45.00 per 100.

MOONSHINE. A beautiful triandrus hybrid, star-shaped, creamy white flower, often 3 to a stem, drooping gracefully, very beautiful and a great favorite, especially for the rock garden or for naturalizing in the shade. \$2.40 for 10, \$21.00 per 100.

THALIA. Frequently called the orchid-flowered Daffodil. The beautiful white flowers are carried three or four to a stem and are most attractive for either indoor decoration or planting in the rock garden. \$3.10 for 10, \$28.00 per 100.

CYCLAMINEUS HYBRIDS

Cyclamineus blood like that of Triandrus imparts such a distinct form to Daffodils that a separate division has been made for its hybrids, which have trumpets rich yellow, straight and tube-like and perianths reflexed as in a Cyclomen, very early flowering.

FEBRUARY GOLD. Perianth golden yellow, trumpet tinged orange, very early. \$2.50 for 10, \$22.50 per 100.



NARCISSUS TRIANDRUS Agnes Harvey



NARCISSUS TRIANDRUS Moonshine

JONQUILLA HYBRID NARCISSI

GOLDEN SCEPTRE. Standard bearer of the new type of Jonquil X Ajax hybrid which has become popular because so much more gracefully proportioned than the Giant Trumpets; a medium-sized perfectly built flower of deep jonquil yellow, 3 inches or so in diameter, the perianth star-shaped, just a shade lighter in coloring than the trumpet, which is slightly rolled and flaring at the mouth like a miniature Ajax; the whole flower is of the greatest substance, keeping in perfect condition exceptionally long both in the garden and when cut; the foliage is attractive and the flowers are produced on tall tapering stems; late flowering.

\$1.75 for 10, \$15.00 per 100.

JONQUILLA FLORE PLENO. The true old double sweet jonquil, produces in May little heads of rich yellow double flowers, very fragrant.

\$1.75 for 10, \$15.00 per 100.

JONQUILLA SIMPLEX. The true single sweet jonquil, of light elegant growth, bearing out of doors in early May charming clusters of numerous small rich yellow flowers of delicious scent.

\$1.85 for 10, \$15.00 per 100.

VARIOUS SPECIES AND HYBRIDS

Distinct forms, which cannot be classified under any of the foregoing divisions; exceptionally useful for rockwork, edging or small beds.

BULBOCODIUM CITRINUS. Large sulphur Hoop Petticoat, very beautiful pale citron-yellow; height 6 to 8 inches.

\$2.45 for 10, \$22.00 per 100.

BULBOCODIUM CONSPICUUS. Yellow Hoop Petticoat, flowers rich golden-yellow of hoop-petticoat and rush-like foliage; height 6 inches.

\$1.50 for 10, \$12.00 per 100.

BULBOCODIUM MONOPHYLLUS. White Hoop Petticoat, producing in winter little snowy white flowers of exquisite beauty; height 6 inches.

\$3.75 for 10, \$35.00 per 100.

CANALICULATUS. A dainty little Polyanthus. Narcissus from Mentone, suitable for sunny situations in the rock garden; it has narrow erect bluish green foliage and bears heads of three to four flowers with white perianth and globular golden cup, sweetly scented; height 6 inches.

\$1.50 for 10, \$12.00 per 100.

JUNCIFOLIUS. Small graceful rich yellow flowers, rather smaller than buttercup, with a dainty little flat crown.

\$2.10 for 10, \$18.00 per 100.



IRIS HOLLANDICA

Bulbous Irises

IRIS HOLLANDICA (Dutch Iris).

This very distinctive group is of very recent origin and has in a few years won international recognition. The flowers are not only superior in substance, brilliance and purity of color, but also earlier, larger and of greater refinement than the old Dutch and Spanish Iris.

These Iris are unsurpassed as cutflowers, as they will stand any amount of handling and traveling. Being so much earlier, they are very valuable for forcing.

Their hardiness and large range of colors makes them very useful for garden purposes.

D. HARING. Standards greyish white, falls pure white, very large flower of great substance, early; height 20 inches.

\$1.25 for 10, \$10.00 per 100.

IMPERATOR. Large freeflowering, dark blue.

\$1.25 for 10, \$10.00 per 100.

JACOB DE WIT. Standards very dark blue, falls dark blue. A very early Iris of remarkable substance, the best medium-priced blue; height 22 inches.

\$1.75 for 10, \$15.00 per 100.

WHITE EXCELSIOR. Uniform pure white, falls very broad, very good form and substance, very early forcer, the best medium-priced white; height 22 inches.

\$1.75 for 10, \$15.00 per 100.

YELLOW QUEEN. Standards and falls golden yellow. Thin wiry stems excellent for forcing or outside, the best medium-priced yellow; height 28 inches.

\$1.25 for 10, \$10.00 per 100.

TINGITANA WEDGEWOOD. Standards blue, falls lighter blue; large well formed flower fine for forcing.

\$1.75 for 10, \$15.00 per 100.

